



# ThinX Poland Data Center

Carrier-neutral, 39,800 sq ft, 2N guaranteed power supply, N+1 cooling system, emergency generators, cages or cabinets

[www.thinx.pl](http://www.thinx.pl)



# WHO WE ARE

Data Centers

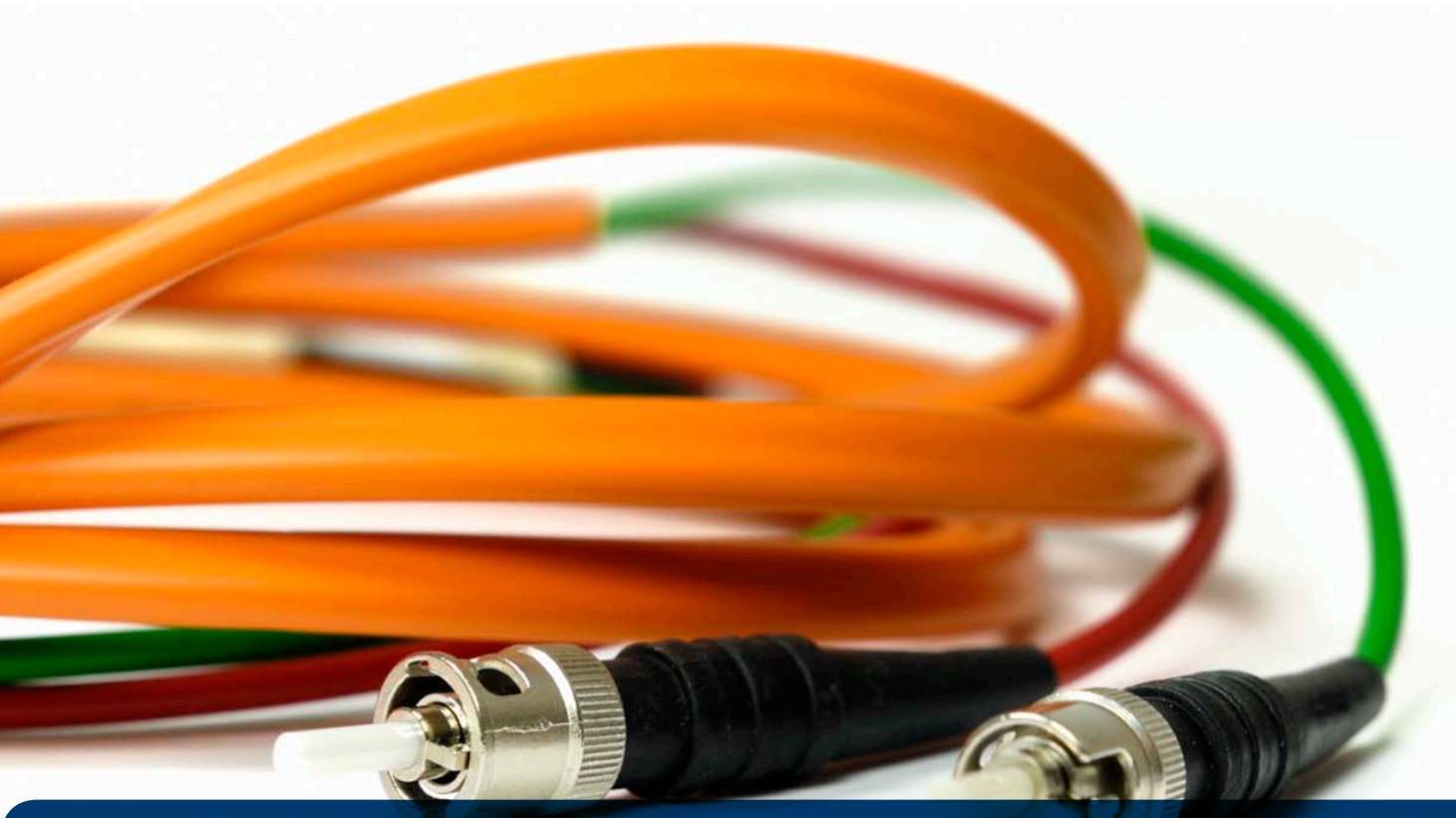
Broadband data transmission

Internet access

**ATM S.A.** is a Polish public company (WSE: ATM) providing innovative ICT solutions for business since 1991. Under the brands of ATMAN and Thinx Poland the company offers telecommunications services based on its own fiber networks and three data centers in Poland, with over 8,500 sq m (ca. 91,500 sq feet) of state-of-the-art colocation space.

Key elements of ATM's offer include: colocation and hosting, broadband data transmission and Internet access. In particular, carriers, Internet portals, traditional media and financial institutions may be found among the receivers of ATM services.

**Thinx Poland** is the largest carrier-neutral data center in Poland, located in the strict business center of Warsaw. Concurrently it operates as Internet exchange point with PoPs in 11 cities in Poland and 3 cities abroad (Amsterdam, Frankfurt and London).



In the ICT market since 1991

# FACILITY OVERVIEW

Your colocation space will be located in the most modern data center in Warsaw. It is also one of the largest DCs in Poland.

The scale of Thinx Poland, a purpose-built colocation and telecommunications facility, ensures future expandability. It guarantees long-term availability of colocation space, power supply and fiber-optic lines. No other data center in Poland can offer anything similar.

## BUILDING MANAGEMENT SYSTEM

<b>Building monitoring</b>	→ Central computerized monitoring systems
<b>Alarm management</b>	→ All alarms monitored 24/7/365

## THE FACILITY

<b>Building structure</b>	→ Monolithic ferroconcrete framework and reinforced pillars, no windows in technical and server rooms
<b>Completion date</b>	→ Q1 2010
<b>Total size of the facility</b>	→ 3,700 sq m (39,800 sq ft)
<b>Occupied equipment floor space</b>	→ 1,400 sq m (15,050 sq ft)
<b>Vacant equipment floor space</b>	→ 600 sq m (6,450 sq ft)
<b>Construction roadmap</b>	→ 2,000 sq m (21,500 sq ft)
<b>Storage space</b>	→ On request
<b>Parking space (secure)</b>	→ 30 parking spaces
<b>Accessibility</b>	→ 7.4 km from Warsaw Chopin Airport → 6.9 km from Warsaw city centre → 5.9 km from railway station
<b>Loading / unloading</b>	→ Loading bay and lifts
<b>Minimum floor to ceiling clearance</b>	→ 2,550 mm (8.4 ft)
<b>Maximum floor load</b>	→ 1,500 kg/sq m (3,300 lb/sq ft)
<b>Minimum raised floor void</b>	→ 700 mm (2.3 ft)

Meets Tier III requirements

# CONNECTIVITY

## CARRIER-NEUTRAL

Thinx Poland allows its customers to connect to many telecommunications operators (international, domestic or local ones) by applying the same terms and prices to all customers and providers. Telco.Ring, a DWDM fiber-optic ring connecting our data center with key telecommunications nodes in Warsaw, is the solution that guarantees the neutrality of this service.

## CONNECTIVITY

<b>External routing</b>	→ Diverse routing via ducts entering the building from 3 different sides. Cables are routed securely to the ODF in the MMR
<b>Internal routing</b>	→ Standard: 4xUTP from cabinet to MMR1 or MMR2 On request: UTP, SMF, MMF from cabinet to MMR1 or MMR2
<b>Fibers</b>	→ ATMAN, GTS Energis, ITSA, Netia, SPEC, Tele-B, Telnap, Tel-Team, TP, UPC/ASTER
<b>Carriers in DC</b>	→ Akamai Technologies, ATMAN, Cogent Communications, Emitel, e-Telco, Exatel, GTS Energis, Interoute, ITSA, Level 3, Lukman, Netia, NOM, P4, SPEC, Tele-B, TP, T-Systems, UPC/ASTER etc.
<b>Carriers in Telco.Ring</b>	→ A1 Telekom Austria, Aero2, ATMAN, CenterNet, Effortel, Emitel, e-Telco, Exatel, GTS Energis, Hawe, Hurricane Electric, Interoute, Level 3, Mediatel, MNI, NASK, Netia, NOM, NTT, ORANGE Business Services - Trading Solutions, P4, PERN, Petrotel, Pionier, RWE Stoen, Sferia, Tata, Telia, Tiscali, TK Telekom, TP, T-Systems, UPC etc.
<b>IXPs</b>	→ AMS-IX, DE-CIX, KIX, LINX, NetIX, PLIX, PWR Thinx, TPIX

Connections outside Thinx Poland may be routed through Telco.Ring, through dark fibers, or as ATMAN City. Link data transfer services using Gigabit Ethernet, Fibre Channel, SDH or E1. We also ensure Internet access (1 or 10 Gigabit Ethernet) with bandwidths ranging from 10 Mbps to full port speed.

Member of:



Global peering

# POWER

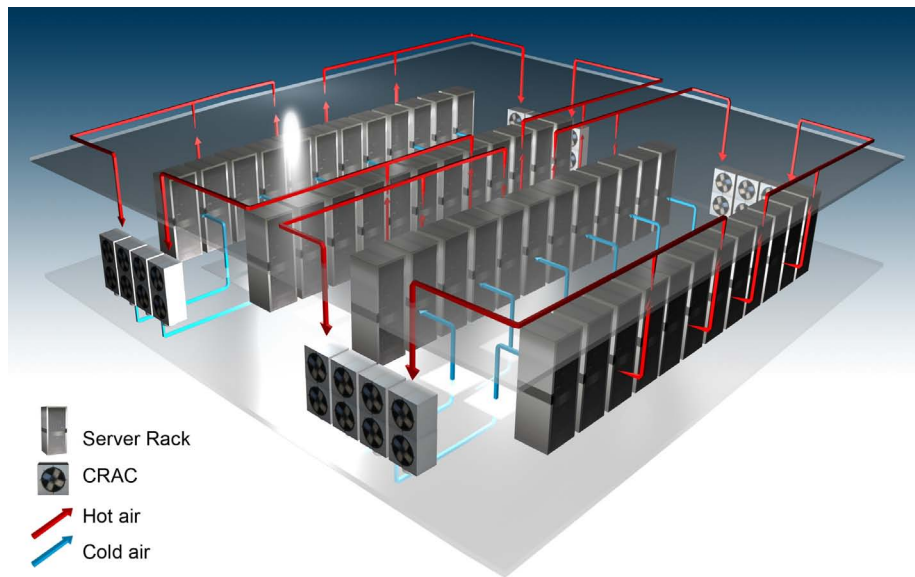
## POWER

<b>Power supply</b>	→ 16 MW (dual-feed)
<b>Transformers</b>	→ 4 units of total power 3,200 kVa
<b>Power distribution</b>	→ 230 V / 400 V AC (2N), distributed via dual independent circuits to rack level
<b>Power</b>	→ 4x16 A (2A+2B) per rack. Other circuits possible on request
<b>Power density</b>	→ 10 kW per cabinet as standard. Up to 25 kW per cabinet
<b>UPS system (present)</b>	→ 3,200 kVA static UPS
<b>Diesel gensets (present)</b>	→ 2 units of total power 4,400 kVa



Guaranteed 16 MW power supply

# ENVIRONMENT CONTROL



## ENVIRONMENT CONTROL

<b>Air conditioning</b>	→ CRACs with N+1 redundancy
<b>Capacity</b>	→ 2 kW/sq m. High density solutions possible on request
<b>Temperature</b>	→ 22°C (±3°C)
<b>Relative humidity</b>	→ 45% (±15%)
<b>Racks</b>	→ Hot/cold aisle concept
<b>High density</b>	→ Up to 25 kW per rack possible on request. Customized solutions

Efficient cooling

# SECURITY & FIRE PROTECTION

## FIRE PROTECTION

**Fire detection system** → Multi-sensor smoke detection and early smoke detection systems

**Fire suppression system** → Gas (Inergen) fire extinguishing system. Automatic fire suppression system in the equipment rooms  
→ 120-minute fire resistance

## SECURITY

**Security systems** → CCTV system (inside and outside)  
→ Zoned access control system based on proximity card  
→ Visitors are escorted within the building  
→ Intrusion detection systems  
→ Access list  
→ On request customized security systems (e.g. man-traps)

**24/7/365 services** → Guards on-site  
→ Monitoring  
→ Network Operation Center  
→ Technical staff

**Entrance** → Electronic ID  
→ All alarms monitored  
24/7/365



24/7/365 support

# PREMIUM CLASS SERVICES

Depending on the scale of our customers' needs, Thinx Poland offers technical space in dedicated rooms or separated areas in colocation halls, server rack lease, or single device colocation. The racks have power supply and internal cabling. We can also provide fiber or UTP links between racks of a single customer. The cross connections are made on one of the two main switchboards.

## SUPPORT

**Standard** → Rack installation  
→ 24/7/365 on-site engineering  
→ Remote hands

**Advanced** → Router / switch configuration  
→ Server OS installation & troubleshooting  
→ SAN installation & troubleshooting  
→ Database installation & troubleshooting

"Interoute has a long-standing relationship with ATM that has always been highly valued. Interoute sees this relationship as strategically important for the future development of Interoute in the Polish and CEE region. This mutually beneficial partnership demonstrates our commitment to the future of Poland as the gateway between Europe, CIS countries and Asia. This deal is a fundamental endorsement of Interoute's strong and growing reputation in the CEE market."

**Ljubica Draskic, CEE Regional Director, Interoute**

Support

Telecommunications center of Poland



# MIGRATING YOUR SERVERS IS NOT A PROBLEM

Our experts will help you to prepare the most effective solution and configuration for your business. Whether you plan to expand or upgrade your infrastructure or are considering changing or expanding your server locations, we will be able to assist.

## We provide:

- Experienced teams of highly qualified specialists
- Supervision for entire projects
- Quick delivery of various propositions of solutions with pricing

## CERTIFICATES

<b>Physical security control objectives, processes, procedures and controls</b>	→ ISO/IEC 27001:2005 certified by the British Standards Institution
	→ PN-EN ISO 9001:2009 certified by IQNet and PCBC

"ATM S.A. presents professional attitude towards the customer's needs, conducts able communication and responsibly fulfills its commitments. We are convinced to have made the right choice of ATM S.A. as telecommunications operator for AXA Polska S.A."

**Adam Waszkiewicz,**  
Information Systems Manager, AXA

Your data center services partner in Europe



# WHY DATA CENTER IN POLAND?

- Low and reliable electricity prices
- The Polish data center market is among the most dynamically developing ones in Europe, with the annual growth of 15-20%, and already today it meets the most rigorous requirements of its customers.
- We offer state-of-the-art colocation space at even 30% less than the market price for data centers in Frankfurt, Berlin, London, Moscow, Prague or Vienna.
- ATM data centers are used by Europe and the world's largest financial institutions, media outlets, and telecommunications operators. We have provided services to dozens of clients from all over the world for over 20 years.
- Poland is conveniently located in Central Europe (its capital city, Warsaw, lies 510 km from Berlin, 560 km from Vienna and 1,150 km from Moscow) and has excellent communication links with the largest hubs in Europe and the Middle East. Additionally, our company, as a telecommunications operator, has its own international links to Frankfurt, Amsterdam and London.



## MORE INFO

To learn more, visit [www.thinx.pl/en](http://www.thinx.pl/en), send an e-mail to [info@thinx.pl](mailto:info@thinx.pl) or call **+48 22 51 56 100**.

**TRADE OFFICE:**

ATM S.A.  
Grochowska 21a  
04-186 Warsaw, Poland  
tel: +48 22 51 56 100  
info@thinx.pl  
www.thinx.pl/en

**THINX POLAND**

**DATA CENTER**

**LOCATION:**

Konstruktorska 5  
02-673 Warsaw  
Poland

Published in March 2013